

PROPERTIES

- ▶ FLEXTEC® Polymer based formula
- ▶ Isocyanate- free and Solvent- free
- ▶ No need to support joints with mechanical fixings
- ▶ High initial tack
- ▶ Moisture-reactive curing
- ▶ Sound and vibration damping
- ▶ Over paintable and sand able once cured
- ▶ Easy application at low temperature
- ▶ Weather and aging resistant
- ▶ Correctable for a few minutes
- ▶ No shrinkage

APPLICATIONS

- For indoor and outdoor use
- Strong initial grab (140 kg/m²)
- Adhesion to wet surfaces
- For most materials and substrates
- Solvent- and isocyanate-free
- Paintable and sandable
- Odourless
- Highly flexible

SUBSTRATE COMPATIBILITY

UniBond Trade PL200 is multiple-substrate compatible including Brick, Ceramic, Concrete, Hardboard, Plasterboard, Plywood, Stone, MDF, Wood, Metal*, UPVC, Glass, Plastics*, painted surfaces *, Mirrors**.

*Pre-test to determine suitable bonding, because of many different substrates. The adhesion of PL200 on polystyrene foam (Styrofoam) can be significantly improved by precoat with diluted wood glue. Mix wood glue about 1 : 1 with water and spread onto the substrate. After drying of the precoat, PL200 are ready to apply.

**Use mirrors acc. DIN EN 1036-1, ask for technical advice for large-scale objects.

All absorbent and non-absorbent substrates are suitable. Except PE, PP, PTFE, acrylic glass, plasticized PVC, copper and brass. With coated substrates, a check of product suitability or professional advice is recommended. Wet surfaces are possible if it has the possibility to dry. Not recommended for permanent water immersion.



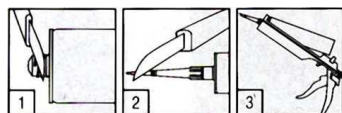
PROCESSING

Surface Preparation

Ensure surfaces to be bonded are clean and free of dust, grease or oil. Pooled water on absorbent substrates should be first removed. Substrates must be stable. Remove the soiling with the appropriate solvent or sand down surfaces and clean afterwards from dust. Before application, mask off the adjacent area with foil or tape, if necessary. Check paint or coatings are firmly attached, if not remove it. Curing of the adhesive requires the intake of a small amount of moisture (either from the atmosphere or substrate). Adhesion on many smooth surfaces can be improved with a wash-primer.

Application

Cut off tip of the cartridge above the screw thread (1). Screw on plastic nozzle and diagonally cut off the tip of the nozzle (2). Place cartridge into gun (3).



Opening of the plastic cartridge

Apply adhesive onto one of the surfaces: 1) In spots in order to smooth uneven surfaces, 2) in wave-like form for higher initial tack with wide surfaces or 3) in straight strands for smaller surfaces. In case of outdoor use, apply vertical strands.



Application of the adhesive

Release gun after appliance to stop adhesive from flowing. For good extrudability, cut the nozzle sufficient (min. 5mm diameter) or in a V-shape.

In case of 2 non-absorbent surfaces: Ensure Ventilation (1 mm Minimum gap). Adhesive must not form continuous areas as contact with air is necessary for adhesive setting. Then put the two surfaces together, correct if necessary, and press thoroughly. Make sure the adhesive tracks do not merge.

Heavy items and items under tension have to be supported and fixed for at least 24 hrs.

After curing:

When fully cured, UniBond Trade PL200 can be painted. Water-based acrylic paints are particularly suitable.

We recommend pretest, because of the many different paints. Oxygen-curing paints (e.g. alkyd-resin) show longer drying/tackiness. 2K-Epoxy paints show bad levelling property.

TEMPERATURES

Application

Application Temperatures: + 5°C to + 40°C

Service

Heat resistance: - 30°C to + 80°C, +100°C for short periods

CHARACTERISTICS

Material	Flextec®-Polymer
Density	1.6 – 1.7 g/cm ³
Open time	~ 15 min.
Gap filling	Max. 20 mm
Initial tack	14 g/cm ²
Final strength	1.0 – 2.0 N/mm ²
Shelf Life	18 month in cool places
Setting time	~ 2mm / day
Shrinkage	No shrinkage
Consumption/Coverage	250 – 350 g/m ²
Elongation at rupture DIN 53504	~ 100 %

STANDARDS

ISO

ISO 16938-1 and -2: Suitable for natural stone, no staining

IMPORTANT ADVICE

Cleaning

Remove uncured spots of adhesive at once, clean tools directly after use with a dry cloth and afterwards with commercial solvents, alcohol or cleaning petrol, do not use water.

The cured UniBond Trade PL200 is insoluble in all solvents and can only be removed mechanically with appropriate tool (scraper).

Storage



PL200

Grab Adhesive

Store away from heat, flame, and spark in a cool area. Product is not damaged by freezing, but avoid big temperature-changing during storage. Once opened, be sure to recap, use entire cartridge shortly after opening.

Shelf Life

18 Months when stored cool, dry and free from frost in original, unopened packaging after date of manufacture.

SAFETY

Keep out of reach of children. If medical advice is needed, have product container or label at hand.

Safety Advice

Consult the Material Safety Data Sheet (mymsds.henkel.com) for UniBond Trade PL200. www.unibond-trade.co.uk

PACKAGING

UniBond Trade PL200 is supplied in 448g cartridges.

DISPOSAL

Product and packaging disposal

Dispose of waste and residues in accordance with local authority requirements (please refer to Safety Data Sheet for more information).

LIMITATIONS OF USE

Do not use UniBond Trade PL200 as a glazing sealant, on bituminous substrates or on building materials, which might bleed oils, plasticizer or solvents, which could attack the product.

Not suitable for applications with water pressure or permanent water immersion/constant damp, e.g. in swimming pools below the water line, water pipes. Do not use UniBond Trade PL200 to seal bathtubs, washbasins or tiled walls/floors in bathrooms.

UniBond Trade PL200 will not bond to PE, PP, PTFE, PMMA (Acrylic), plasticized PVC, copper and brass.

Pre-test coated substrates to ensure suitability of use.

Product may only be used for mirror bonding if the mirror coating and the protective lacquer complies with EN 1036-1. In case of unknown mirror qualities and large projects, please ask mirror producer for a recommendation.

UniBond Trade PL200 cannot be overpainted.

"The information provided in this Technical Data Sheet (TDS) including the recommendations for use and application of the product are based on our knowledge and experience of the product as at the date of this TDS. The product can have a variety of different applications as well as differing application and working conditions in your environment that are beyond our control. Henkel is, therefore, not liable for the suitability of our product for the production processes and conditions in respect of which you use them, as well as the intended applications and results. We strongly recommend that you carry out your own prior trials to confirm such suitability of our product. f.

Any liability in respect of the information in the Technical Data Sheet or any other written or oral recommendation(s) regarding the concerned product is excluded, except if otherwise explicitly agreed and except in relation to death or personal injury caused by our negligence and any liability under any applicable mandatory product liability law."

Henkel AG & Co. KGaA

40191 Düsseldorf, Germany

Elch GmbH

Henkelstrasse 67 – D-40589 Düsseldorf

HPSA Ltd.

Hinckley, Leics. – LE10 1DP

Henkel Limited

Road 5, Winsford Industrial Estate, Winsford, Cheshire, CW7 3QY

www.unibond-trade.co.uk

